



# Unser Shops & Pads

Northeast corner of Unser & Vista Oriente NW

Albuquerque, NM  
2220 Unser Blvd. NW



NORTH ELEVATION

|  Demographics | 1 Mile   | 3 mile   | 5 mile   |
|--|----------|----------|----------|
| Population   | 7,907    | 63,259   | 175,668  |
| Med. Income  | \$61,327 | \$46,433 | \$46,185 |

Please contact us for leasing opportunities

## Available


- Shops- 100% occupied
- 1B1 | 55,055 SF | \$5,895/Mo
- 1B2 | 29,290 SF | \$9,795/Mo
- 1B4 | 138,255 SF | \$27,995/Mo

## Surroundings Info

- Adjacent to Walgreens with cross access.
- Zoned NR-C.
- 550 Pulte Homes (Del Webb Mirehaven) south of the Petroglyph National Monument.
- All offsite improvements are complete.
- Locally owned and managed.



### Contact

 Vanessa Valadez  
 505.884.3578  
 Vanessa@PetersonProperties.net

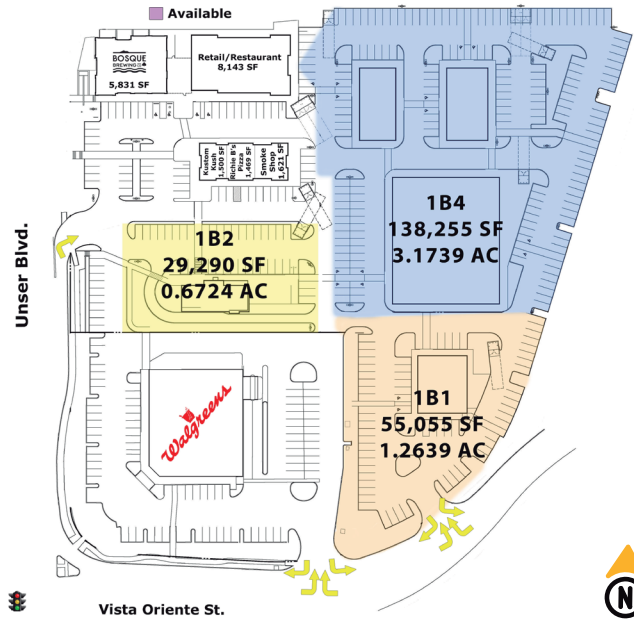
 [PetersonProperties.net](http://PetersonProperties.net)  
 /petersonpropertiesllc  
 /petersonpropertiesllc  
 /peterson.properties



# Unser Shops & Pads

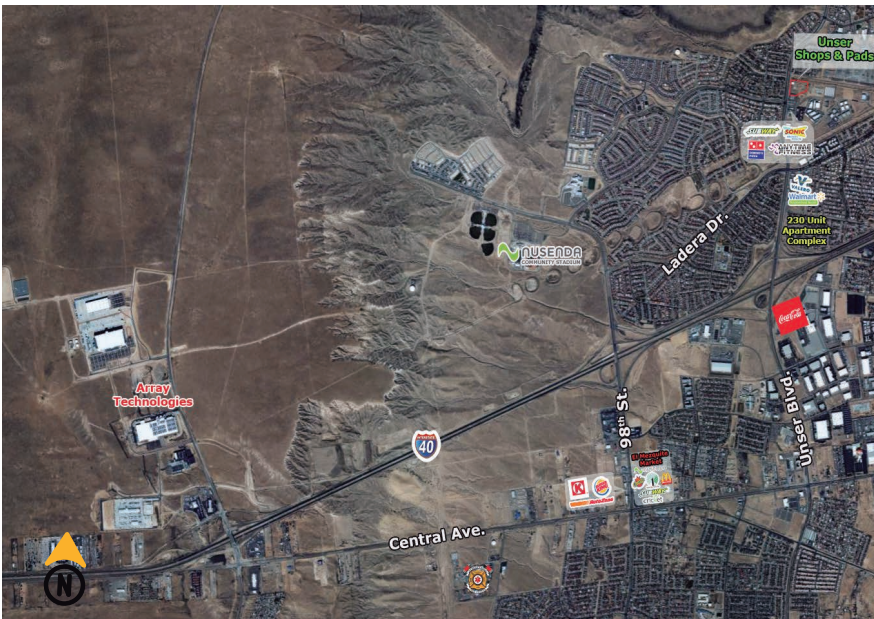
Northeast corner of Unser & Vista Oriente NW

## Site Plan

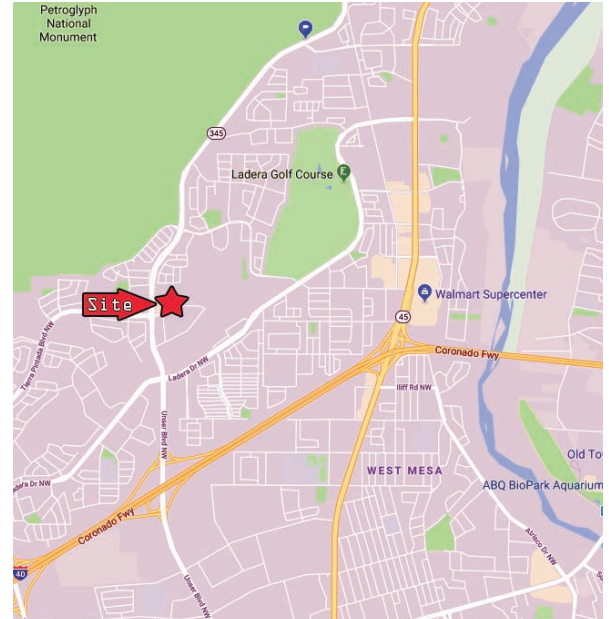


Please contact us for leasing opportunities

## Aerial Map



## Northeast corner of Unser Blvd. & Vista Oriente St.



### Contact us

Vanessa Valadez

505.884.3578

Vanessa@PetersonProperties.net

