



# Volcano Point

Shopping Center

West Albuquerque  
101 98<sup>th</sup> Street NW



New Housing  
Development



Parking  
Available



Underserved  
Area



28,800 Cars  
per day on 98<sup>th</sup> St.

Please contact us for leasing opportunities



Demographics

1 Mile

3 mile

5 mile



Available

Population

13,435

87,874

159,316

● 100% occupied

Med. Income

\$43,640

\$42,503

\$41,191



Surroundings Info

- 1 Mile south of I-40.
- Anchored by AutoZone, Circle K & Burger King.
- Going home side to fast growing and underserved Southwest Albuquerque.

- 240 unit apartment building coming soon.
- Excellent exposure and visibility.
- Retail, restaurant & service businesses.
- Locally owned and managed.



### Contact

Vanessa Valadez

505.884.3578

Vanessa@PetersonProperties.net

PetersonProperties.net

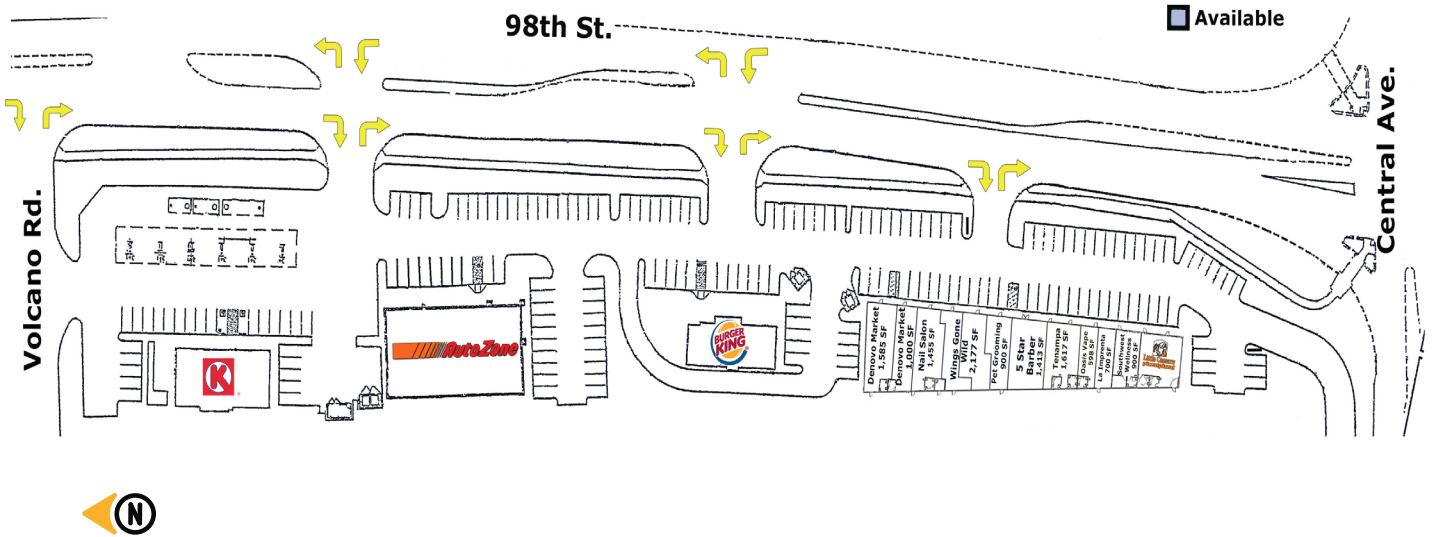
/petersonpropertiesllc

/petersonpropertiesllc

/peterson.properties



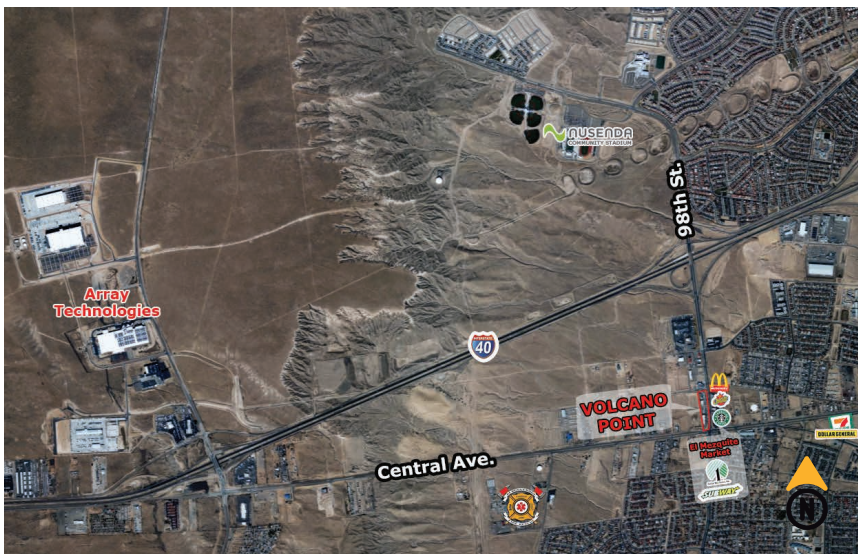
### Site Plan



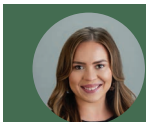
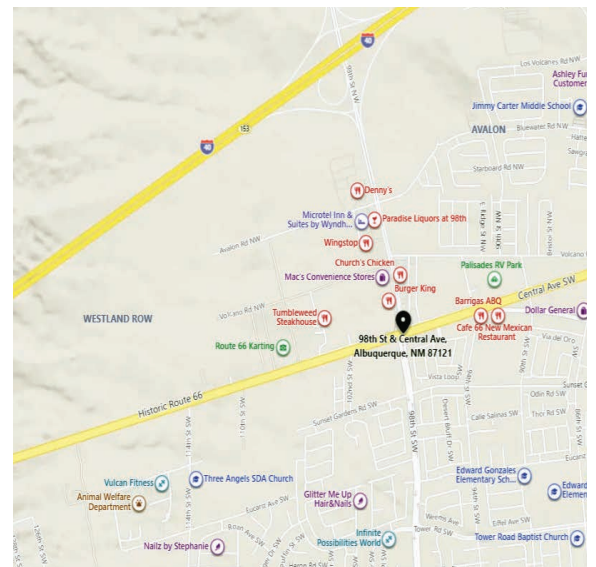
Please contact us for Leasing Opportunities



### Aerial Map




### Northwest corner of 98<sup>th</sup> Street and Central Ave. in West Albuquerque



### Contact us

Vanessa Valadez

505.884.3578

Vanessa@PetersonProperties.net

