


Albuquerque

5200-5204 Constitution Ave NE



 Demographics	1 Mile	3 mile	5 mile
Population	8,715	98,197	212,398
Med. Income	\$26,977	\$38,370	\$38,130
Day Population	15,094	112,272	251,665

Please contact us for leasing opportunities

Available

- Commercial Space
- 100% occupied

Surroundings Info

- Easy access to and from I-40.
- 40,400 cars/day on San Mateo Blvd.
- Locally owned and managed.



Contact

 Brighton Pope
 505.884.3578
 Brighton.Pope@PetersonProperties.net

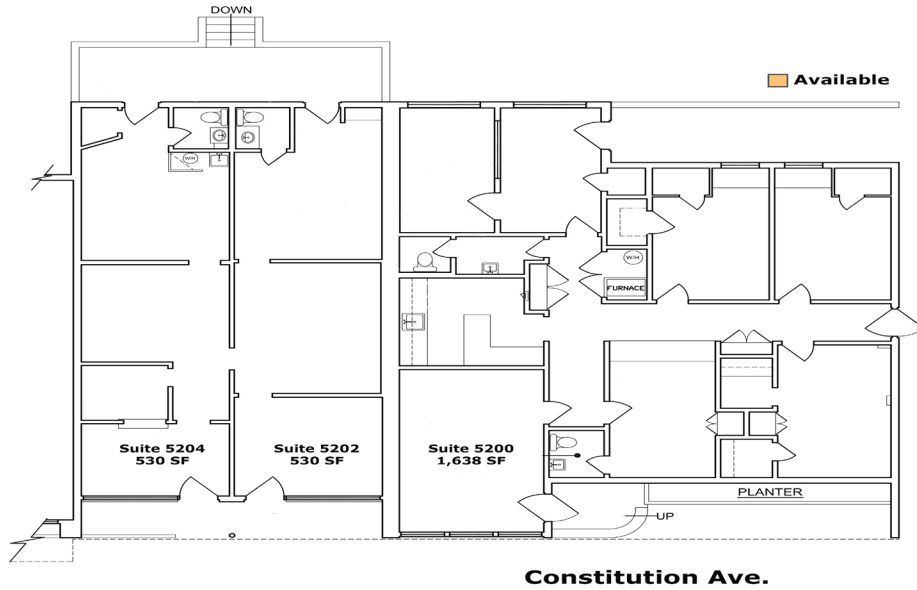
 PetersonProperties.net
 /petersonpropertiesllc
 /petersonpropertiesllc
 /peterson.properties



5200-5204 Constitution

Commercial Spaces

Site Plan



Constitution Ave.

Please contact us for leasing opportunities

Aerial Map



5200-5204 Constitution Ave. NE Albuquerque, NM 87110



Contact us
Brighton Pope | 505.884.3578 | Brighton.Pope@PetersonProperties.net

