



# Shops@ Mountain Run

Shopping Center

Albuquerque, NM - Northeast Heights

5809 Juan Tabo Blvd. NE



## Demographics

1 Mile

3 mile

5 mile

	1 Mile	3 mile	5 mile
Population	14,690	110,659	225,802
Med. Income	\$68,280	\$68,068	\$56,908
Day Population	3,254	32,064	129,188

Please contact us for leasing opportunities



## Available

- Suite H | 2,713 SF | \$7,420/Month



## Surroundings Info

- Adjacent to Walgreens & Smith's Supermarket.
- Hard to penetrate far northeast heights area.
- Successful, long term co-tenants.
- Locally owned and managed.



### Contact

Brighton Pope  
 505.884.3578  
 Brighton.Pope@PetersonProperties.net

[PetersonProperties.net](http://PetersonProperties.net)

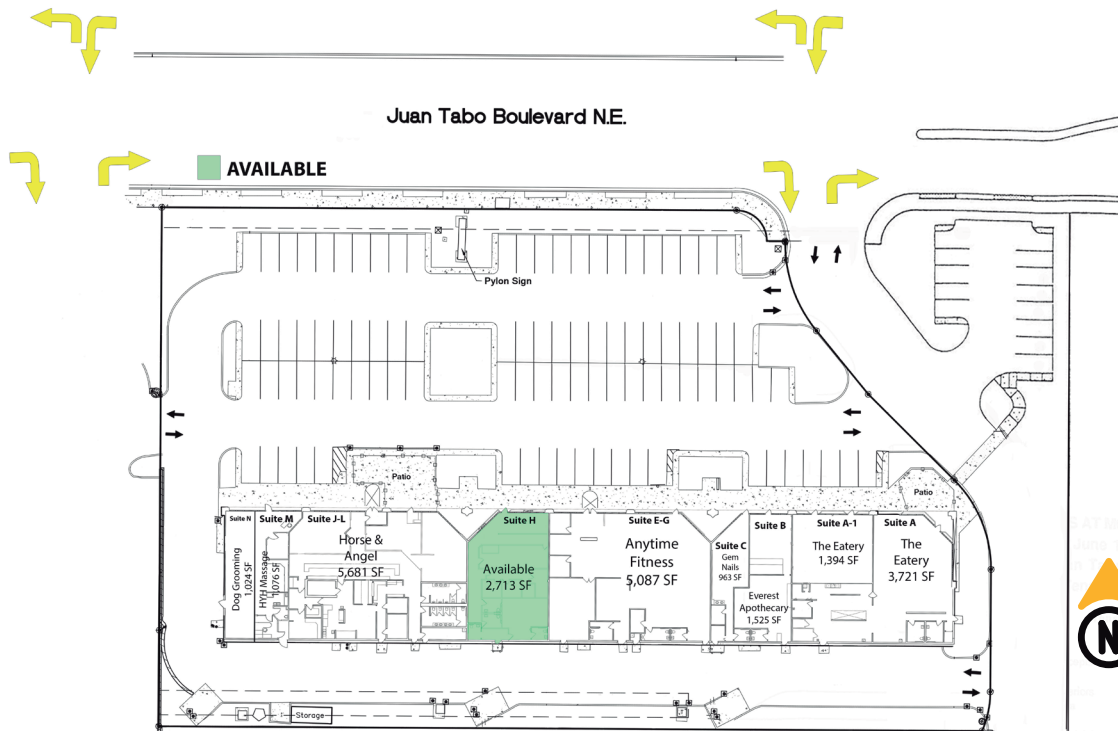
/petersonpropertiesllc

/petersonpropertiesllc

/peterson.properties



### Site Plan



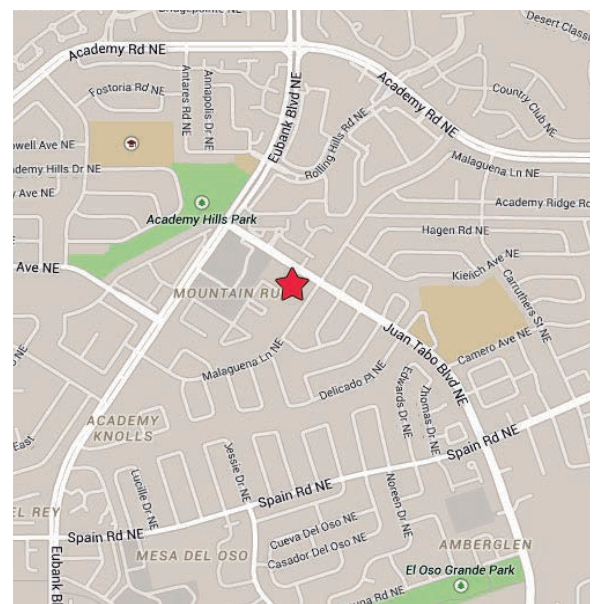
Please contact us for leasing opportunities



### Aerial Map




### 5809 Juan Tabo Blvd. NE Albuquerque, NM



### Contact us



 Brighton Pope

 505.884.3578

 Brighton.Pope@PetersonProperties.net

