


Uptown Albuquerque 2501 San Pedro Dr. NE



 Demographics	1 Mile	3 mile	5 mile
Population	17,938	163,731	351,981
Med. Income	\$43,826	\$39,499	\$41,743
Day Population	15,902	106,814	251,027

Please contact us for leasing opportunities

Available

First Floor

- Suite 101J | 100 SF | \$200/Month
- Food Truck Parking Available
- Ground lease | 2,920 SF | \$1,245/Month

Second Floor

- 100% occupied

Surroundings Info

- Across from Coronado Mall. Near many restaurants.
- Wi-Fi included.
- Located in the heart of the Uptown Submarket.
- Monument signage.
- Locally owned and managed.



Contact

 Brighton Pope
 505.884.3578
 Brighton.Pope@PetersonProperties.net

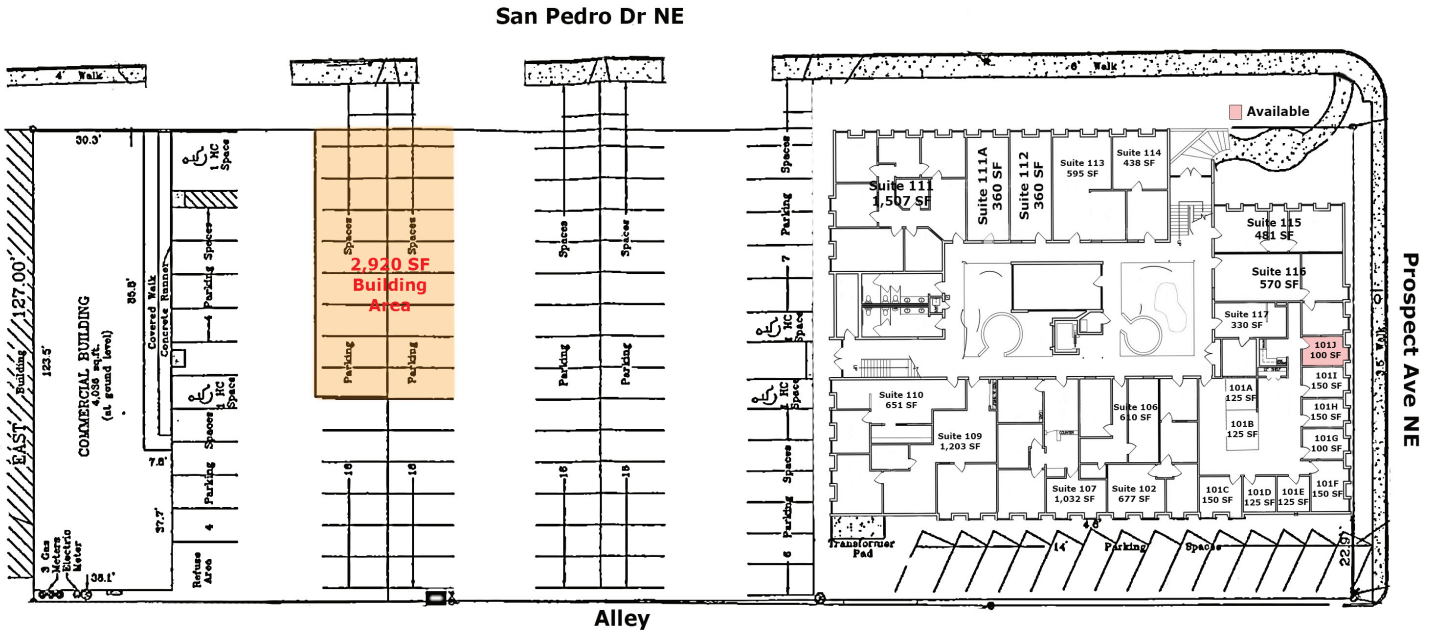
 PetersonProperties.net
 /petersonpropertiesllc
 /petersonpropertiesllc
 /peterson.properties



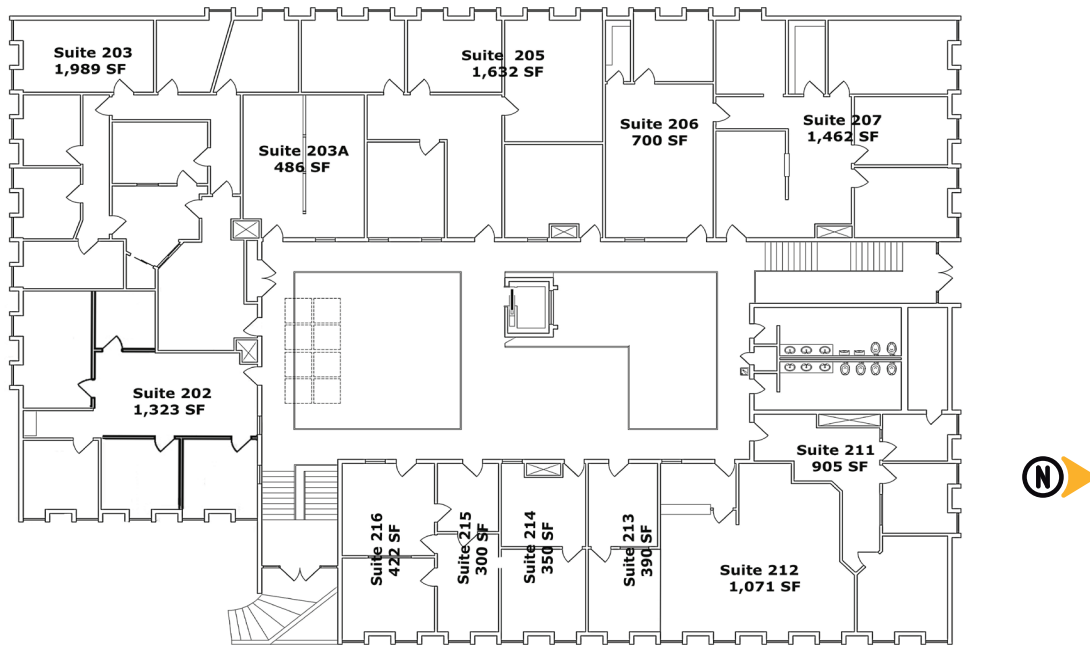
2501 San Pedro NE

Office Spaces

First Floor - Site Plan



Second Floor - Site Plan



Contact us

Brighton Pope

505.884.3578

Brighton.Pope@PetersonProperties.net

