



3rd & Copper

Retail, Restaurant or Office Space

Albuquerque, NM - Downtown
220 Copper Ave. NW



Available

- Suite 100 | 860 SF
\$1,290/Month



Huge Surrounding Population



Active Nightlife Area



HUB Zone



Demographics

1 Mile

3 mile

5 mile

	1 Mile	3 mile	5 mile
Population	14,201	94,321	246,137
Med. Income	\$29,556	\$36,044	\$39,102
Day Population	51,489	122,790	216,162



Surroundings Info

- Excellent frontage along Copper Ave. & 3rd Street.
- Downtown location next door to the Andaluz Hotel and across the street from First Plaza Galleria.
- Locally owned & managed.



Contact

- Brighton Pope
- 505.884.3578
- Brighton.Pope@PetersonProperties.net

● PetersonProperties.net

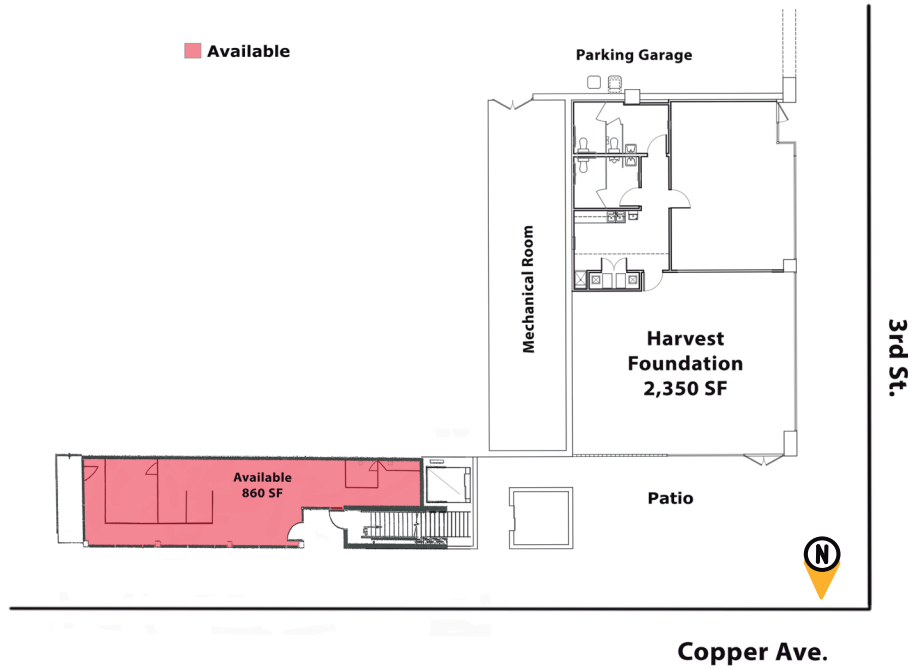
● /petersonpropertiesllc

● /petersonpropertiesllc

● /peterson.properties



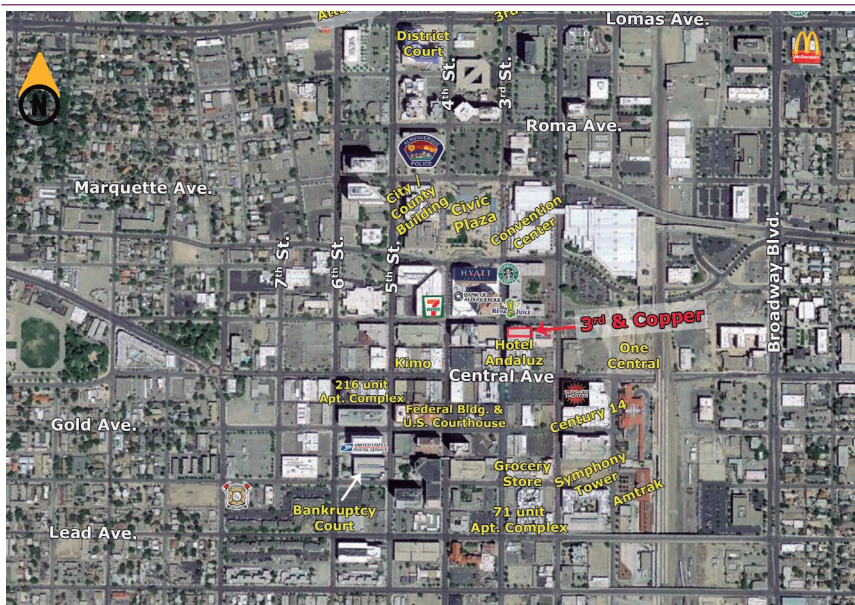
Site Plan



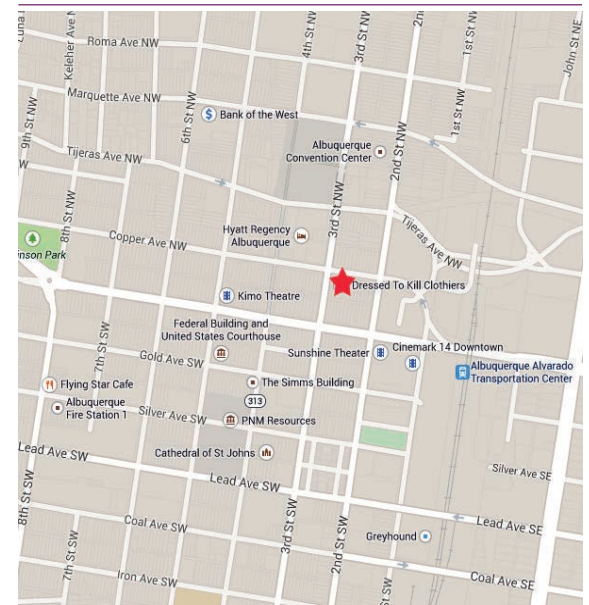
Please contact us for leasing opportunities



Aerial Map




220 Copper Ave. NW Albuquerque, NM



Contact us

 Brighton Pope |
  505.884.3578 |
  Brighton.Pope@PetersonProperties.net

