


# Albuquerque

3802-3812 Central Ave. SE & 100 Solano Dr Ave SE



 Demographics	1 Mile	3 mile	5 mile
Population	9,683	81,081	174,352
Med. Income	\$30,370	\$35,131	\$36,255
Day Population	5,184	38,217	78,879

Please contact us for leasing opportunities

## Available

- Retail Space | 100% occupied
- Suite O | 400 SF | \$625/Month
- Apartments | 275 SF | \$595/Month
- Food Truck Parking Agreements

## Surroundings Info

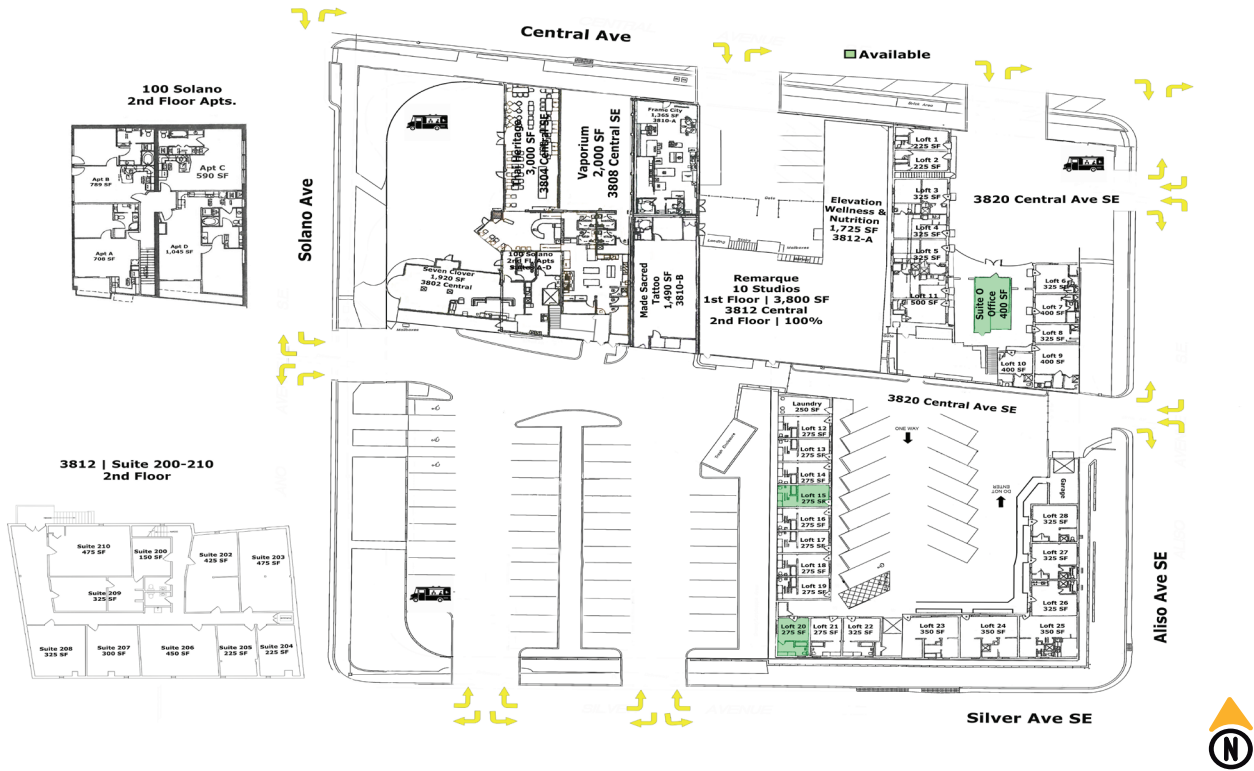
- Excellent Nob Hill location.
- Plenty of Parking.
- Prominent visibility from Central Ave.
- Many restaurants nearby.
- Locally owned and managed.



### Contact

 Brighton Pope  
 505.884.3578  
 Brighton.Pope@PetersonProperties.net

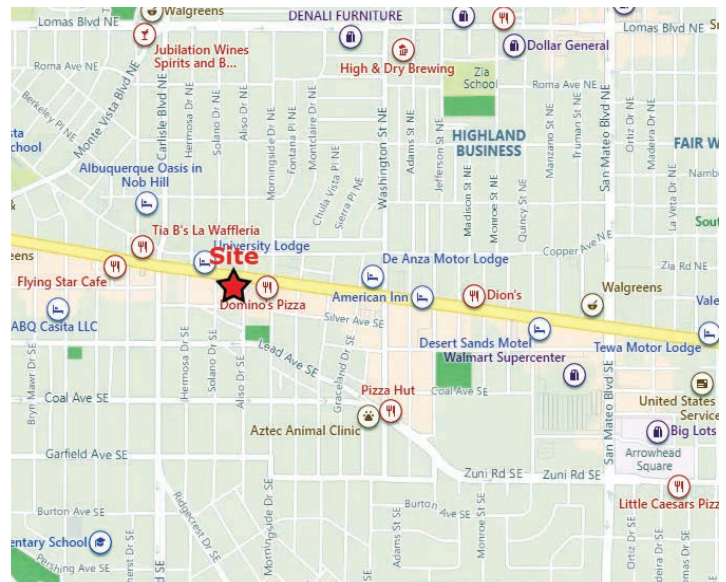
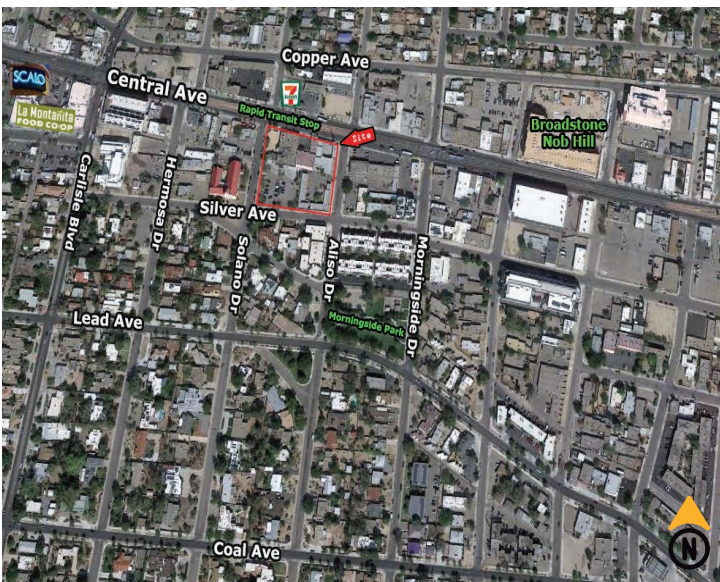
 [PetersonProperties.net](http://PetersonProperties.net)  
 /petersonpropertiesllc  
 /petersonpropertiesllc  
 /peterson.properties



**Please contact us for leasing opportunities**

 **Aerial Map**

 **3802-3812 Central Ave. SE & 100 Solano Ave SE Albuquerque, NM 87108**



 **Brighton Pope**

 **505.884.3578**

 **Brighton.Pope@PetersonProperties.net**

