



# Autry Plaza

Office, Executive Suites & Drive thru

Uptown Albuquerque  
1330 San Pedro Dr. NE



Demographics	1 Mile	3 mile	5 mile
Population	13,364	140,998	319,333
Med. Income	\$43,826	\$39,499	\$41,743
Day Population	15,902	106,814	251,027

Please contact us for leasing opportunities

## Available

First Floor

- 100% occupied
- Drive- thru Available | 919 SF | call for price

Second Floor

- Suite 205L | 225 SF | \$350/Month
- Suite 205O | 250 SF | \$395/Month

## Surroundings Info

- Conveniently located off San Pedro.
- Elevator, monument sign & updated lobby.
- Locally owned and managed.
- Food Truck Parking Available

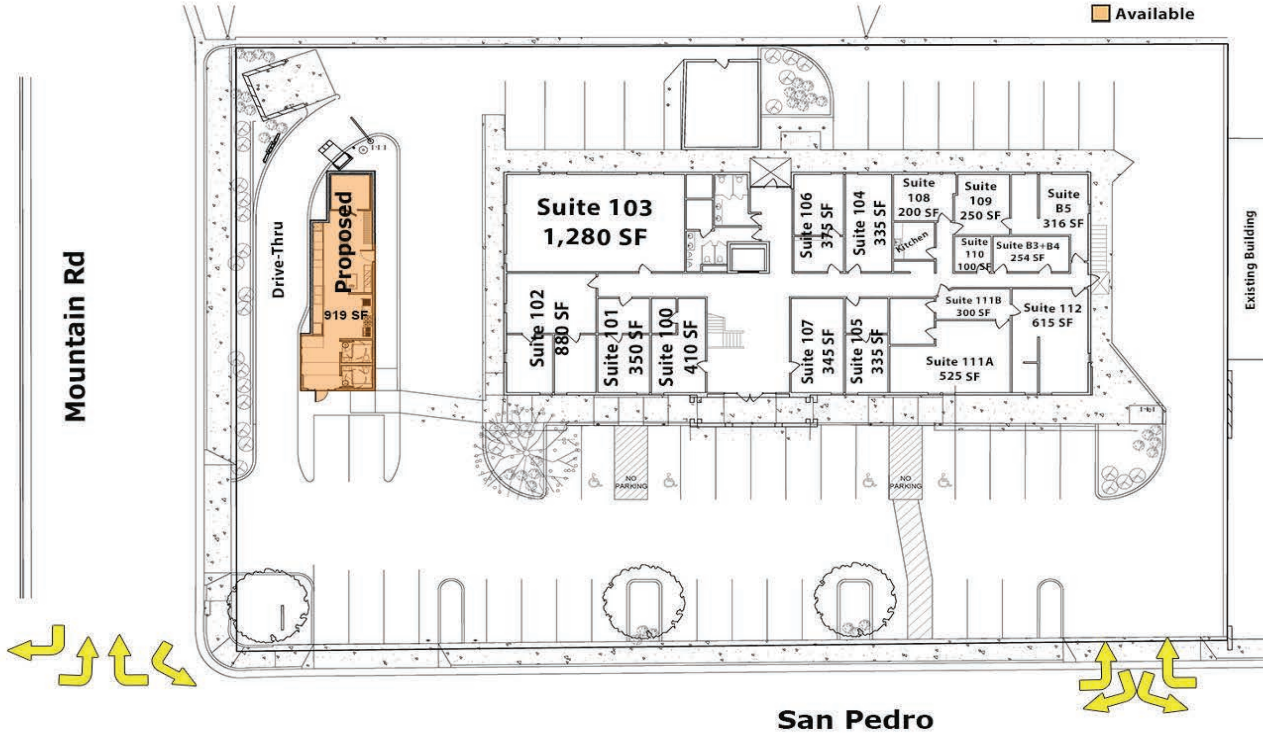


### Contact

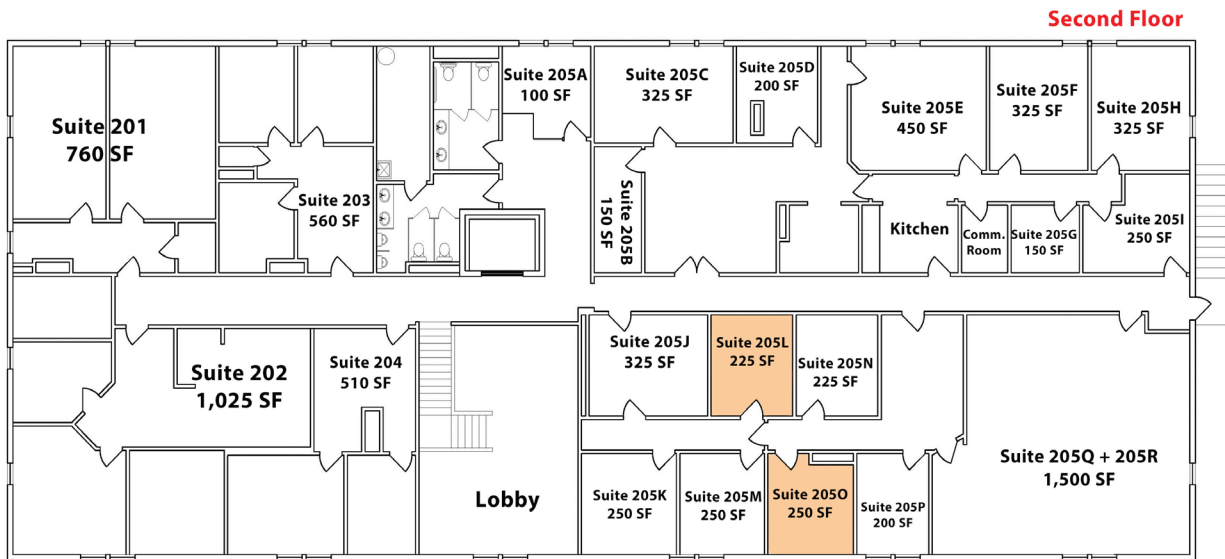
Brighton Pope  
 505.884.3578  
 Brighton.Pope@PetersonProperties.net

[PetersonProperties.net](http://PetersonProperties.net)  
 /petersonpropertiesllc  
 /petersonpropertiesllc  
 /peterson.properties

**Floor Plan- 1<sup>st</sup>**



**Floor Plan- 2<sup>nd</sup>**



**Brighton Pope**

**505.884.3578**

**Brighton.Pope@PetersonProperties.net**

**Contact us**

