



1202-1204 Central Ave. SW

Office Spaces

Albuquerque, NM - Downtown
1202-1204 Central Ave. SW



Available

- Suite 14 | 200 SF
\$275/Month



Huge Surrounding
Population



Dedicated
Parking



Active Nightlife
Area



HUB Zone
qualified location

Please contact us for leasing opportunities



Demographics

1 Mile

3 mile

5 mile

	1 Mile	3 mile	5 mile
Population	12,327	98,038	248,046
Med. Income	\$35,393	\$34,510	\$39,299
Day Population	35,565	110,677	204,126



Surroundings Info

- High Visibility.
- Free WiFi + Secure Access.
- Convenient Access.
- Ample Parking.
- Locally owned and managed.



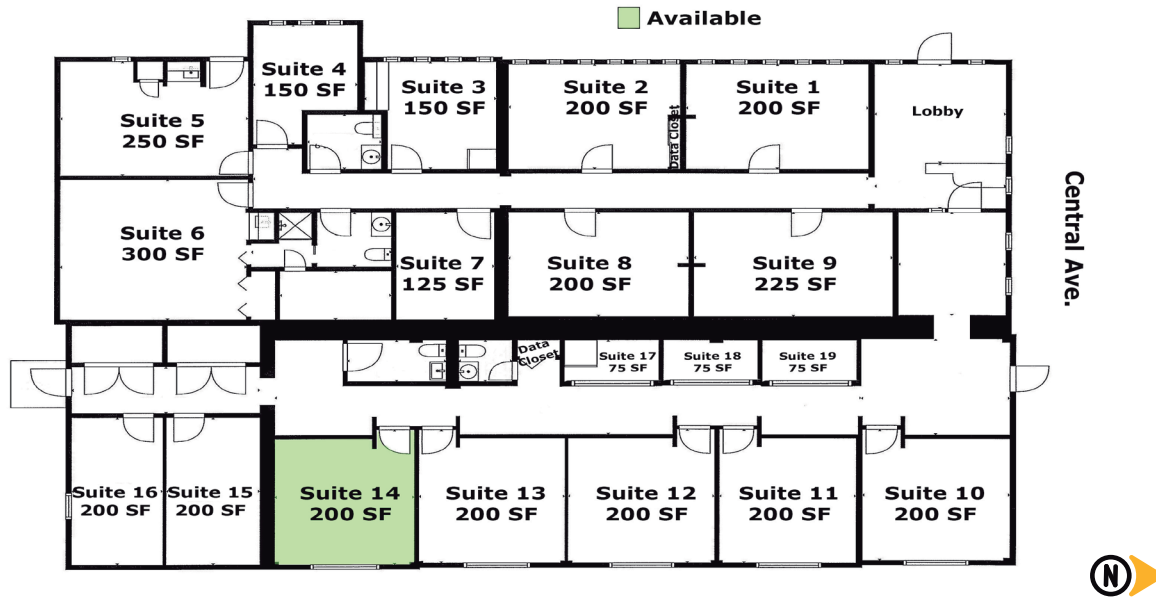
Contact

- Brighton Pope
- 505.884.3578
- Brighton.Pope@PetersonProperties.net

- PetersonProperties.net
- [/petersonpropertiesllc](https://www.facebook.com/petersonpropertiesllc)
- [/petersonpropertiesllc](https://www.instagram.com/petersonpropertiesllc)
- [/peterson.properties](https://www.linkedin.com/company/petersonproperties)




Site Plan



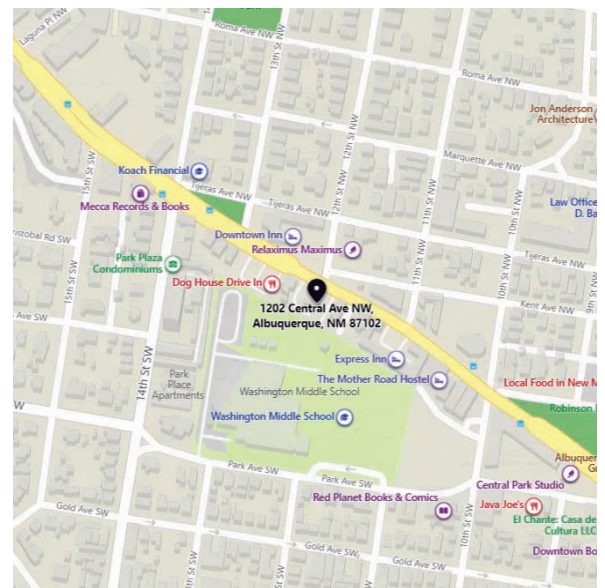
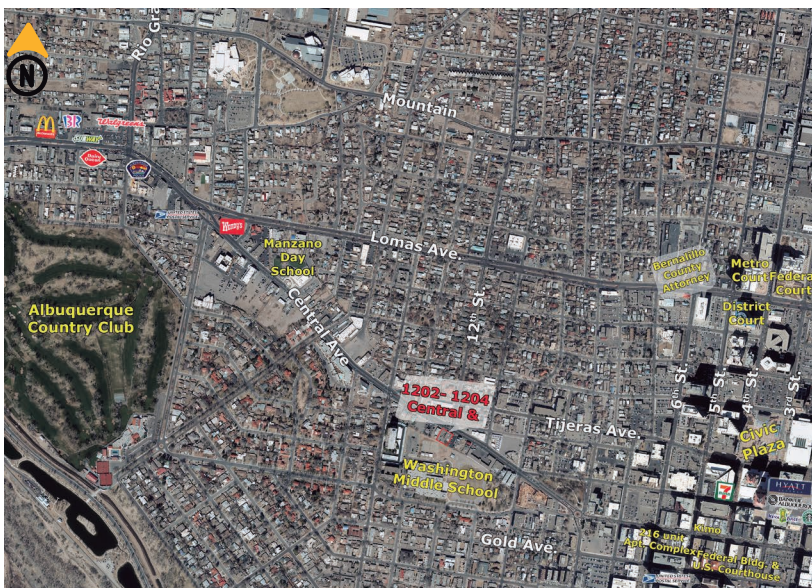
Please contact us for leasing opportunities



Aerial Map



1202-1204 Central Ave. SW Albuquerque, NM



Contact us



 Brighton Pope |  505.884.3578 |  Brighton.Pope@PetersonProperties.net

