



# Montgomery Parkway

Office, Medical & Executive Suites

Albuquerque, NM - Far NE Heights  
10401 & 10409 Montgomery Parkway NE



### Demographics

1 Mile

3 mile

5 mile

	1 Mile	3 mile	5 mile
Population	13,364	140,998	319,333
Med. Income	\$43,826	\$39,499	\$41,743
Day Population	15,902	106,814	251,027

Please contact us for leasing opportunities



### Available

#### 10401 Montgomery Parkway

- Suite 1Q | 115 SF  
\$225/Month
- Suite 2E | 135 SF  
\$225/Month
- Food Truck Parking

#### 10409 Montgomery Parkway

- 100% occupied



### Surroundings Info

- In a well established area.
- Great street appearance with prominent signs.
- Several restaurants and pubs nearby.
- Secured building entry & exit.
- Locally owned and managed.
- Long term, successful cotenants.



### Contact

Vanessa Valadez  
 505.884.3578  
 Vanessa@PetersonProperties.net

[PetersonProperties.net](http://PetersonProperties.net)

[/petersonpropertiesllc](https://www.facebook.com/petersonpropertiesllc)

[/petersonpropertiesllc](https://www.linkedin.com/company/petersonpropertiesllc)

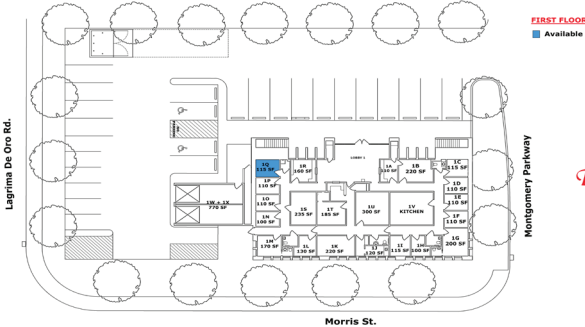
[/peterson.properties](https://www.instagram.com/peterson.properties)



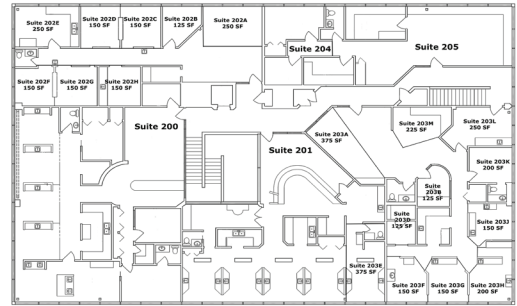
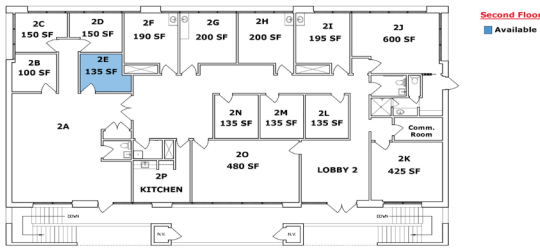
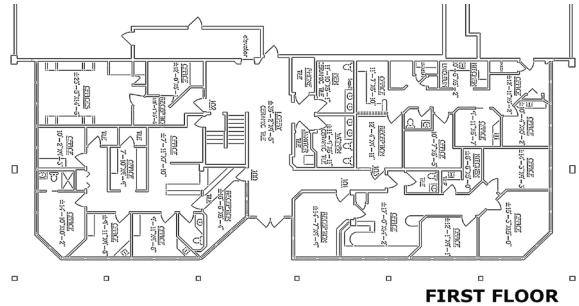
# Montgomery Parkway

## Office, Medical & Executive Suites

### 10401 Montgomery

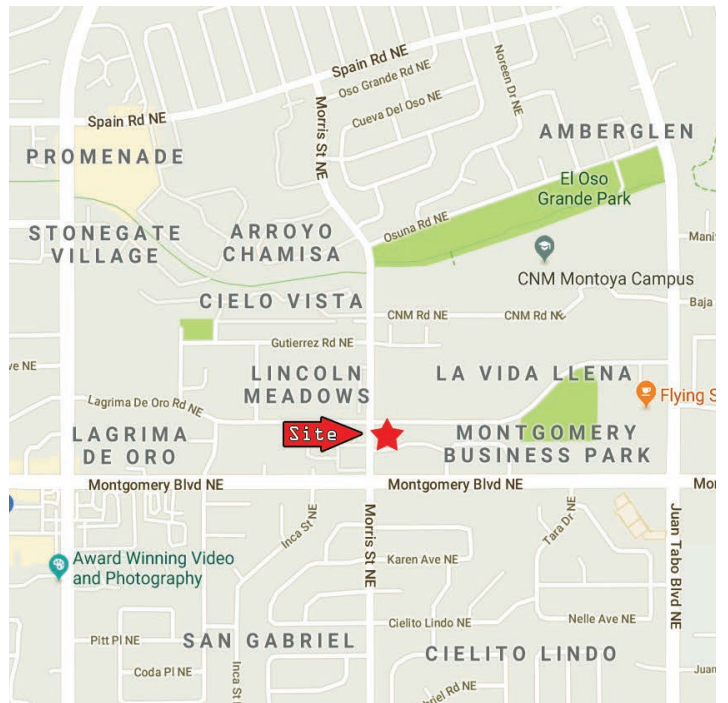
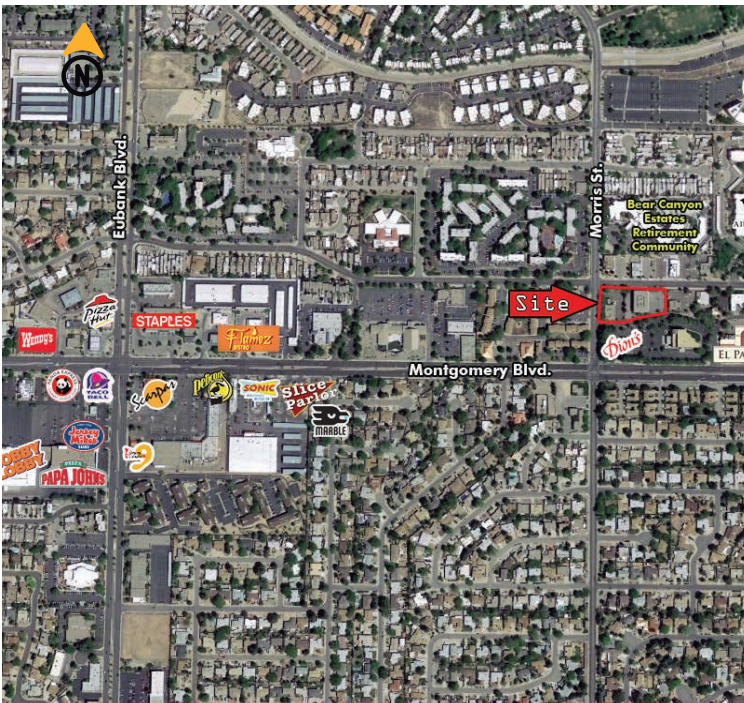


### 10409 Montgomery



### Aerial Map

### 10401 & 10409 Montgomery Parkway NE, Albuquerque NM



### Contact us

Vanessa Valadez

505.884.3578

Vanessa@PetersonProperties.net

