



1202-1204 Central Ave. SW

Office Spaces

Albuquerque, NM - Downtown
1202-1204 Central Ave. SW



Available

- Suite 15 | 200 SF
\$200/Month



Huge Surrounding
Population



Dedicated
Parking



Active Nightlife
Area



HUB Zone
qualified location

Please contact us for leasing opportunities



Demographics

1 Mile

3 mile

5 mile

Population

12,327

98,038

248,046

Med. Income

\$35,393

\$34,510

\$39,299

Day Population

35,565

110,677

204,126



Surroundings Info

- High Visibility.
- Free WiFi + Secure Access.
- Convenient Access.
- Ample Parking.
- Locally owned and managed.



Contact

● Brighton Pope

● 505.884.3578

● Brighton.Pope@PetersonProperties.net

● PetersonProperties.net

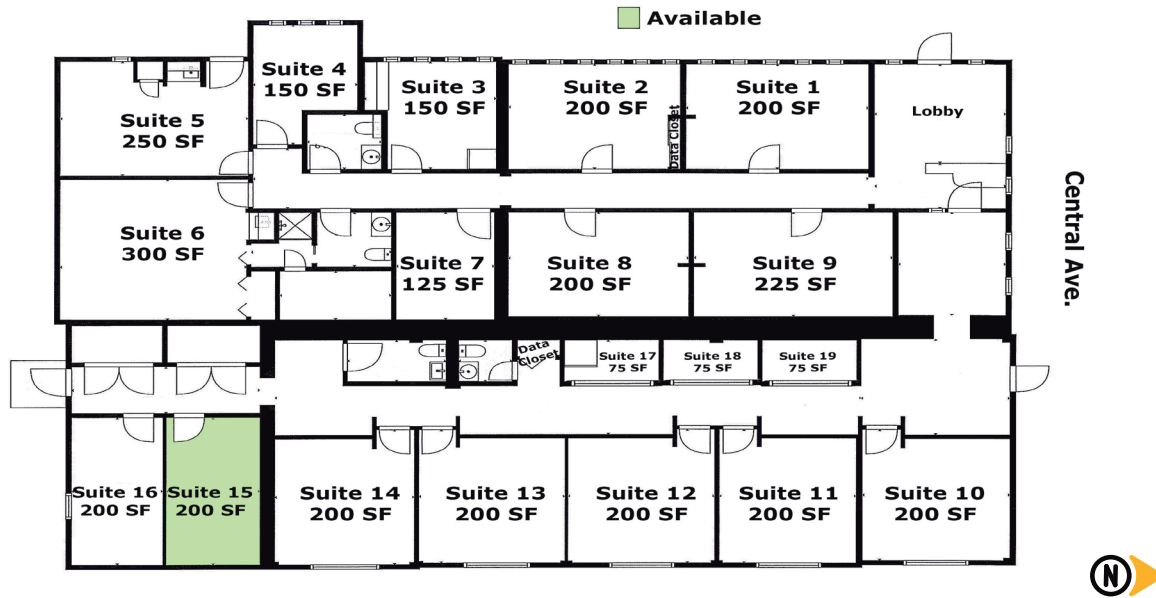
● /petersonpropertiesllc

● /petersonpropertiesllc

● /peterson.properties




Site Plan



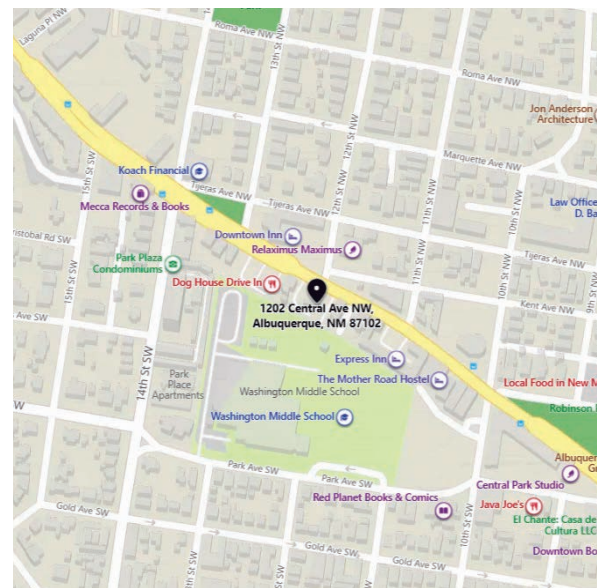
Please contact us for leasing opportunities



Aerial Map



1202-1204 Central Ave. SW Albuquerque, NM



Contact us



 Brighton Pope |
  505.884.3578 |
  Brighton.Pope@PetersonProperties.net

