

## Albuquerque, NM - Downtown

220 Copper Ave. NW



### Available

- 100% occupied



### Huge Surrounding Population



### Active Nightlife Area



### HUB Zone



### Demographics

#### 1 Mile

#### 3 mile

#### 5 mile

Population	14,201	94,321	246,137
Med. Income	\$29,556	\$36,044	\$39,102
Day Population	51,489	122,790	216,162



### Surroundings Info

- Excellent frontage along Copper Ave. & 3<sup>rd</sup> Street.
- Downtown location next door to the Andaluz Hotel and across the street from First Plaza Galleria.
- Locally owned & managed.




### Contact

 Brighton Pope  
 505.884.3578  
 Brighton.Pope@PetersonProperties.net

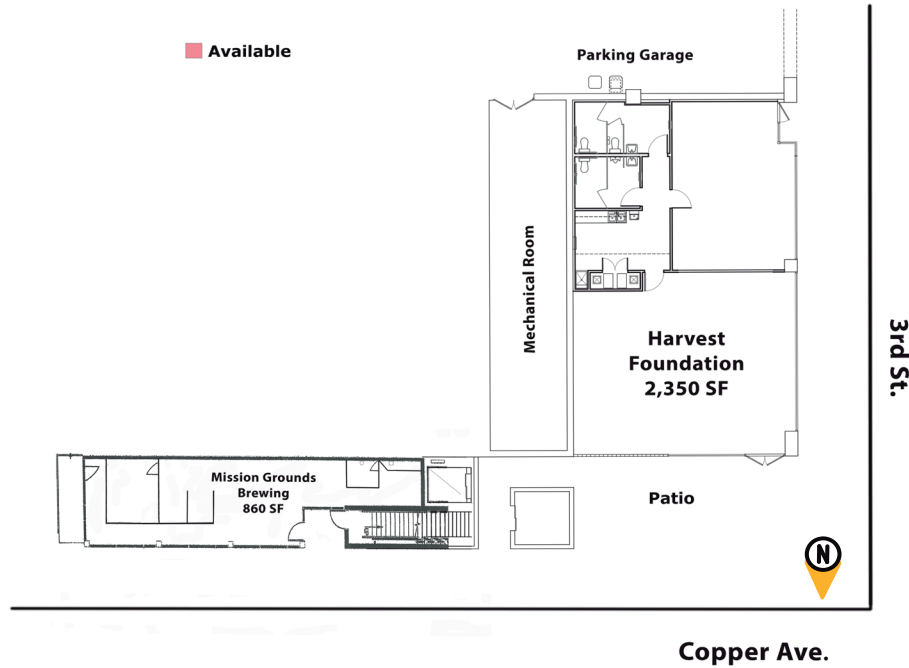
 [PetersonProperties.net](http://PetersonProperties.net)

 [/petersonpropertiesllc](https://www.facebook.com/petersonpropertiesllc)

 [/petersonpropertiesllc](https://www.linkedin.com/company/petersonpropertiesllc)

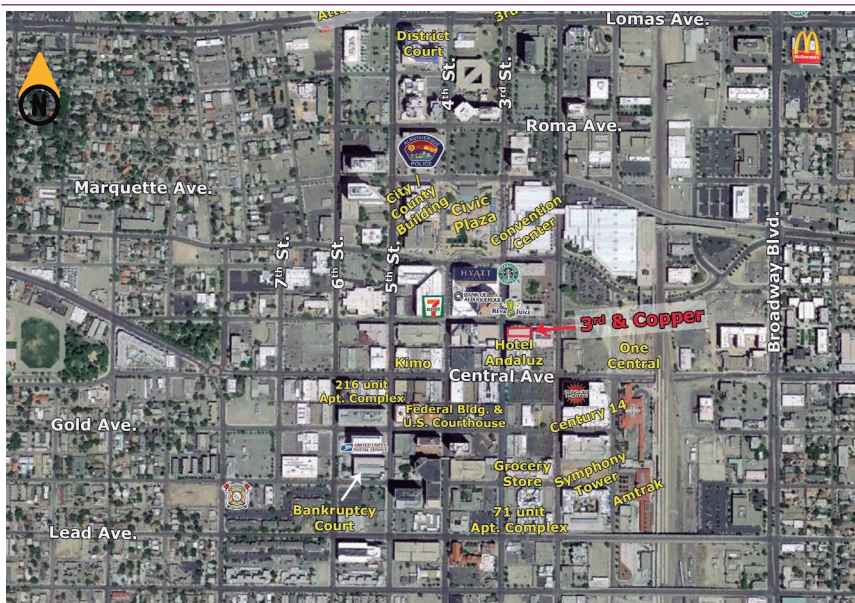
 [/peterson.properties](https://www.instagram.com/peterson.properties)

## Site Plan

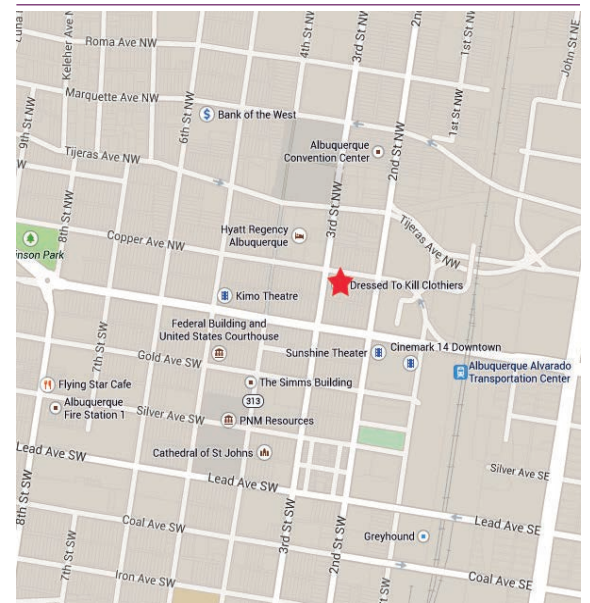


Please contact us for leasing opportunities

## Aerial Map



## 220 Copper Ave. NW Albuquerque, NM



## Contact us



 Brighton Pope |  505.884.3578 |  Brighton.Pope@PetersonProperties.net

